

**Councillor Nick Small**  
**Cabinet Member for Growth + Economy**  
**Liverpool City Council**

# **AESOP Heads of Schools Meeting**

## **Inclusive Economic Growth Strategy – Future Liverpool 2040**

**13 March 2025**



# INCLUSIVE GROWTH STRATEGY



# INCLUSIVE ECONOMY

Build a strong and inclusive economy that leaves no one behind

Strengthen our **key sectors** to drive growth, **innovation, investment** and **productivity**

Build a vibrant, productive and resilient **business base**

Ensure access to **skills development, employment opportunities** and **career building**

Place **people** at the heart of growth activity and supporting **aspirations and networks**

Maximising the benefits and strengthening our foundations

Drive **housing, regeneration and physical infrastructure** to support sustainable and fair growth

Enhance **social, community and cultural infrastructure** to build cohesive and resilient communities

Improve **connectivity and transport networks** to increase access to jobs, services and opportunities

Build a city that is **accessible** to all

Net Zero

Celebration

Equality



# Our People

## A city of contrasts



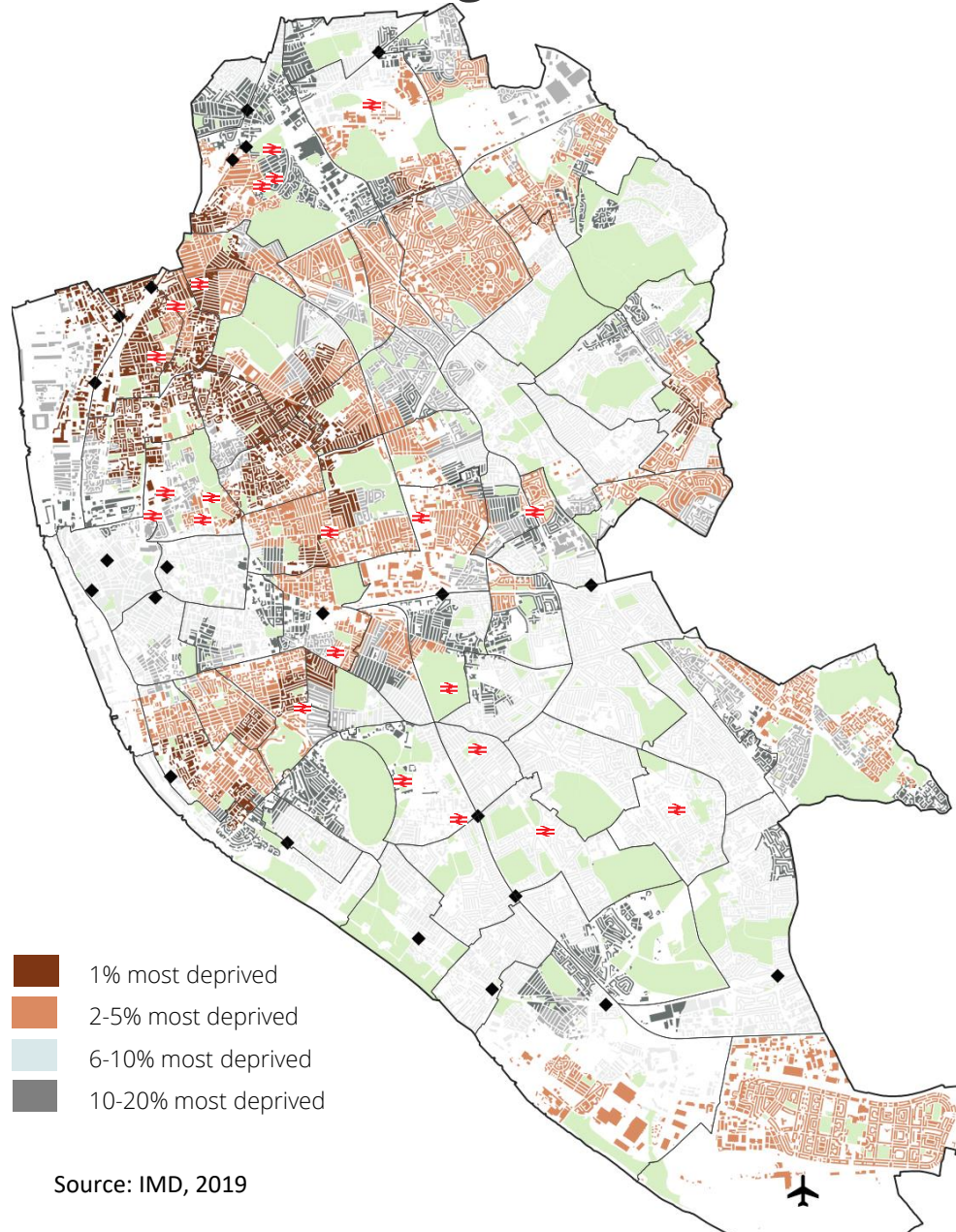
### **Liverpool is a young, vibrant, skilled and diverse city,**

- 0.5m population (2023) and steady growth
- 16.3% aged 16 to 24, (11% in the North West and England)
- Culturally rich and diverse - our ethnic minority population grew from 11.1% in 2021 to 16.2% in 2023
- 44% of our working-age population holds Level 4 (bachelor's degree) qualifications or above, (16.9% in 2004).

### **However there are significant challenges requiring a joined up approach**

- 87,500 people (26%) aged 16-24 were "economically inactive" (year ending Dec 2023. (UK Rate 21%)
- Liverpool's unemployment is 7.5%, Great Britain's 3.9%
- Liverpool's employment rate is 67%, Great Britain's 75.5%
- Those living in our poorest areas live 15 years less than those in more affluent areas, and they live 18 more years with poor health.
- Residents spend **more than a quarter** of their life (26.1%) in ill health
- 24,000 (28.9%) children are living in relative poverty
- **Almost two in three residents live in areas ranked in the most deprived 20% of areas in England.**

63% of our population lives in the top 20% most deprived neighbourhoods in England.



•CONTEXT

- 1% most deprived
- 2-5% most deprived
- 6-10% most deprived
- 10-20% most deprived

Source: IMD, 2019

**49%** of Liverpool's neighbourhoods are among the 10% most deprived areas in the country,

**38%** are among the 5% most deprived areas, and

**10.5%** are among the 1% most deprived.

Dimension	2019	2015
Index of Multiple Deprivation	3 <sup>rd</sup> most deprived	4 <sup>th</sup> most deprived
Income	4 <sup>th</sup>	5 <sup>th</sup>
Income Deprivation Affecting Children	4 <sup>th</sup>	8 <sup>th</sup>
Income Deprivation Affecting Older People	8 <sup>th</sup>	8 <sup>th</sup>
Employment	5 <sup>th</sup>	5 <sup>th</sup>
Education, Skills and Training	29 <sup>th</sup>	35 <sup>th</sup>
Health Deprivation and Disability	3 <sup>rd</sup>	3 <sup>rd</sup>
Crime	22 <sup>nd</sup>	40 <sup>th</sup>
Barriers to Housing and Services	280 <sup>th</sup>	290 <sup>th</sup>
Living Environment	5 <sup>th</sup>	24 <sup>th</sup>

# OPPORTUNITY NORTH LIVERPOOL



# NORTH LIVERPOOL; THE NEXT CHAPTER

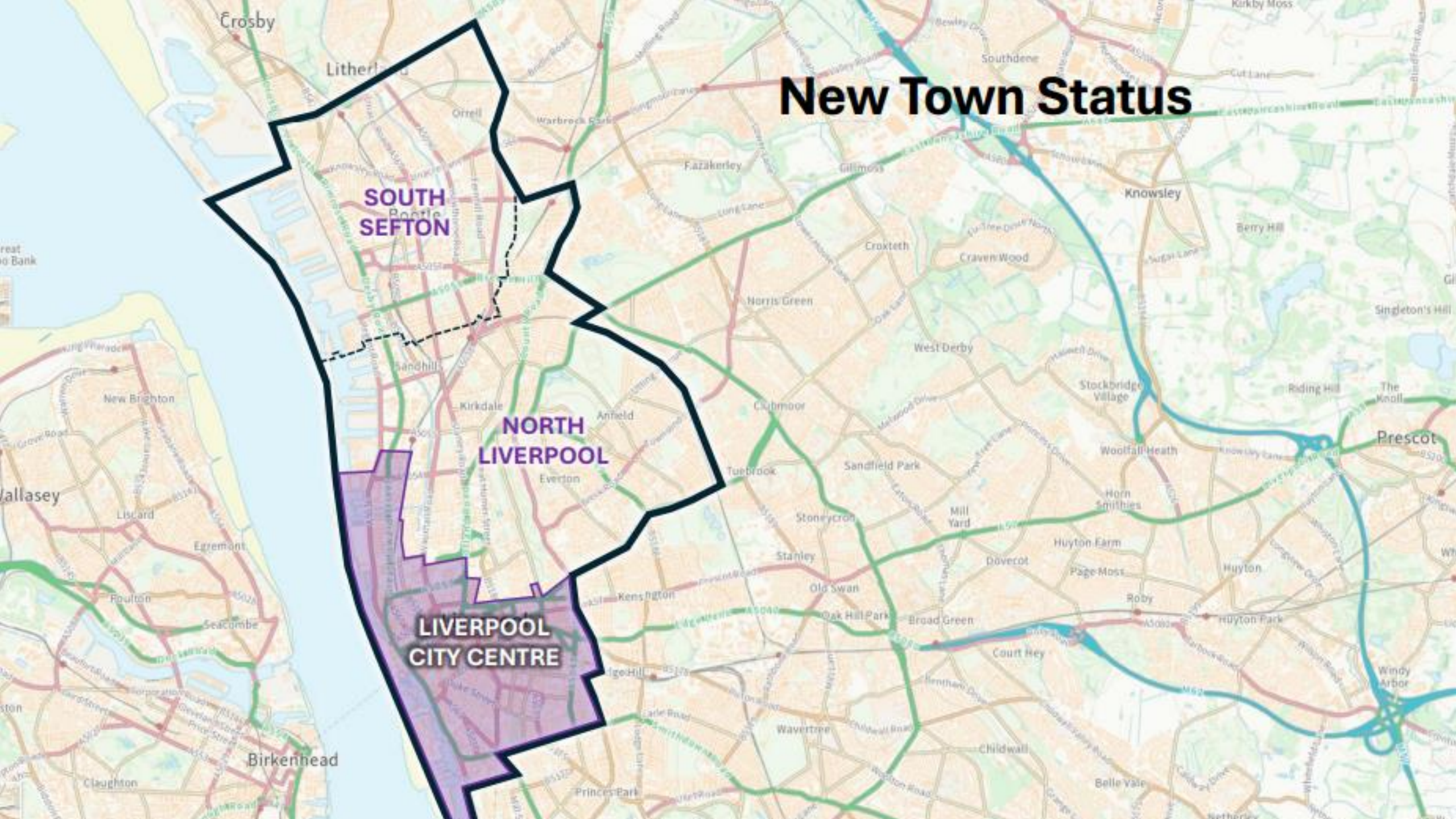


# New Town Status

**SOUTH SEFTON**

**NORTH LIVERPOOL**

**LIVERPOOL CITY CENTRE**



A map of Liverpool, England, showing the city center and surrounding areas. A large area in the north and west of the city center is outlined in red, indicating an emerging LLUDC area. This area includes Stanley Dock, the dock area, and parts of the city center. The map also shows major roads like the A5049, A5047, and A5049, and landmarks like the River Mersey and the city center. The text 'Emerging LLUDC area (Locally-led Urban Development Corporation to create an Accelerated Development Zone)' is overlaid on the map.

# Emerging LLUDC area (Locally-led Urban Development Corporation to create an Accelerated Development Zone)

Liverpool

**LIVERPOOL  
CITY CENTRE**



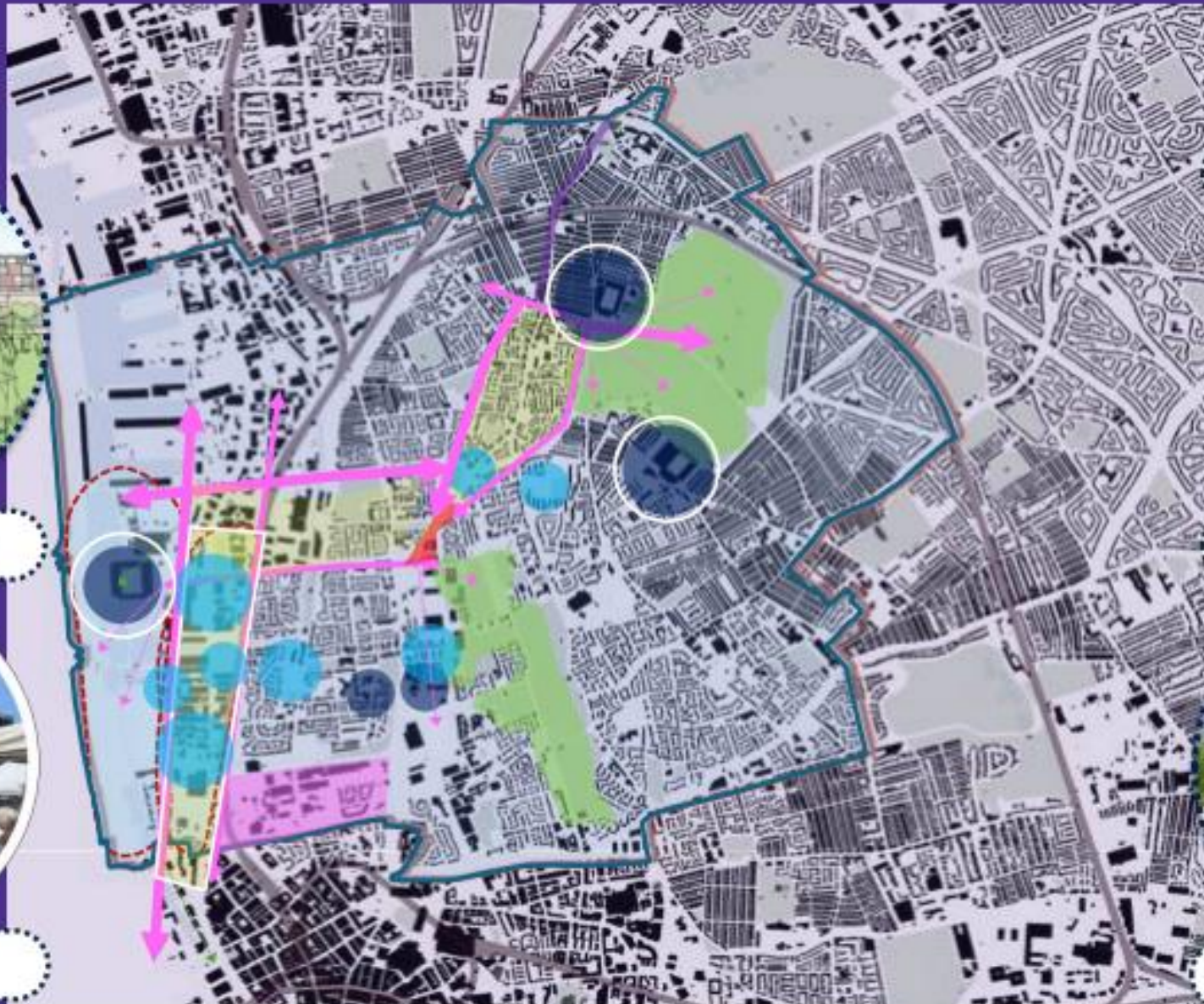
# LIVERPOOL NORTH: WHOLE PLACE OPPORTUNITY



Bramley Moore Dock



Greatie Market



Bootle Strand



Goodison Park Legacy



Anfield Regeneration

## Toffee Trail

linking Goodison to  
Bramley Moore, via  
County Road



**Red Walk**  
linking Anfield  
to City Centre



# WATERFRONT STRATEGY



- 1 Stanley Locks Park
- 2 Howard-Leeds District
- 3 Baltic Beach
- 4 Marina Bridges
- 5 Brunswick Market District
- 6 Brunswick Beach
- 7 The Otter's Pool