

- Wilson, J. W., & Taub, R. P. (2011). *There goes the neighborhood: Racial, ethnic, and class tensions in four Chicago neighborhoods and their meaning for America*, Vintage Books.
- Wood, P. (2015). *Meet me on the corner? Shaping the conditions for cross-cultural interaction in urban public space*. In: Zapata-Barrero, R. (ed.) *Interculturalism in Cities: Concept, Policy and Implementation*. Chapter 4, pp. 53-75, Edward Elgar Publishing.
- Yacobi, H. (2002). "The architecture of ethnic logic: Exploring the meaning of the built environment in the 'mixed-city' of Lod- Israel". *Geografiska Annaler: Series B, Human Geography*, 84(3-4):171-187.
- Yacobi, H. (2013). "Mixed-cities: Towards a counter urban space?", *Jadal*, 18.
- Yacobi, H., & Tzfadia, E. (2009). "Multiculturalism, Nationalism, and the Politics of the Israeli City". *International Journal of Middle East Studies*, 41:289-307.
- Yiftachel, O. (1999). "Planning Theory at the crossroads: The Third Oxford Conference". *Journal of Planning Education and Research*, 18(3):267-270.
- Yiftachel, O. (2009). "Theoretical notes on 'Gray Cities': The coming of urban apartheid?". *Planning Theory*, 8(1):88-100.
- Yiftachel, O., & Yacobi, H. (2003). *Urban ethnocracy: ethnicization and the production of space in an Israeli 'mixed city'*. *Environment and Planning D*, 21(6): 673-693.

ID 1437 | PUBLIC SPACES AND URBAN CULTURE IN SAINT-LOUIS OF SENEGAL. DETERIORATION OR DISAPPEARANCE OF AN AFRICA´S UNESCO SITE

Lucía Martínez-Quintana¹

¹University of Las Palmas de Gran Canaria
lucia.martinez@ulpgc.es

1 INTRODUCTION

This paper collects some of the looks and thoughts arising within the framework of the project "Inter-university cooperation in the management of sustainable tourism between Cape Verde, Mauritania, Senegal and the Canary Islands". It is an activity that took place in the framework of the European project of "University institutional strengthening of the Canary Islands and Africa (Senegal-Mauritania - Cape Verde) space: SEMACA", which belongs to the European programme of cooperation transnational Madeira-Azores-Canary Islands (MAC 2007-2013). We will focus in the case of the city of Saint-Louis in Senegal, at the mouth of the Senegal¹ River, since its planning combines a historical past with strong French influence, with an urban morphology in grid and a building typology that has been awarded the recognition of world heritage of the UNESCO in the year 2000, in contrast to a peripheral urban growth out of the heritage area, where there is little control on its evolution.

The city of Saint-Louis has experienced an exponential growth in its population in recent years, which has generated a rapid urbanisation where the coalescence of buildings is completely uncontrolled. It urban crisis, reflecting an economic crisis and a crisis in the finances of the state, is marked by a decline in socio-economic indicators and a deterioration of living conditions and the health of its inhabitants, in a country where the management of cities is influenced by the predominant role of the State and its leader, standing over local authorities.

Our research is orientated towards the theory and technique of the transformation of the anthropogenic transformation of space based on spatial planning, which includes tourism, sustainability and landscape, understood as necessary elements for achieving social, economic and environmental balance.

¹ Senegal gained internal autonomy within the French West Africa (AOF) in 1958 becoming the Islamic Republic of Mauritania, and achieved independence in 1960.

2 TERRITORIAL ADMINISTRATION

To understand better its development, it is necessary to know some data of this African country, with 706 kilometres of coastline bathed by the Atlantic Ocean and an extension of 196.722 km² located in coastal West Africa, into the depression known as the basin Senegal-Mauritania, between the parallel 12 ° 30' and 16 ° 40' North and the meridians 11 ° 30' and 17 ° 30' West. It borders to the North with Mauritania, to the South by Guinea and Guinea-Bissau, and to the East by Mali. It has the feature to be flowed through this West State of Gambia supported on the river of the same name.

As for the territorial organization of the State, Senegal has inherited a very centralized structure. Despite this, progressively since the 1970s, and especially following the 1996 Decentralization Act, to avoid that, administrative political measures have been applied. Currently Senegal is organized according to the French model of territorial administration in regions, which are divided into departments, and these in turn are subdivided into districts (called as well if they are urban centres) and communes (called this way if they are rural communities).

The Region of Saint-Louis¹ is one of the eleven administrative regions currently comprising Senegal. It lies to the North of the country, forming the border with Mauritania, and is divided into 3 departments, 7 districts, 20 communes and 18 rural communities². The three departments of the Region of Saint-Louis in Senegal are: Saint Louis, Dagana and Podor. Of these three, the Department of Saint-Louis is the most densely populated, with a density estimated of 310 inhabitants/km², opposite the regional average density of 44 inhabitants/km². And within the Department of Saint - Louis, lies the town of the same name, the city of Saint Louis of Senegal, which we can say that it is the fourth most populated of Senegal, with 172,000 people surveyed in 2013, after Dakar (2,682,000 inhabitant), Thiès (282,000 inhabitant) and Kaolack (182,000 inhabitant).

The city of Saint-Louis in Senegal is located at the mouth of the Senegal River that runs through the city from North to South³, and its topography is characterized by a coastal plain to the West, bordered by the Atlantic Ocean, which is rising slightly eastward, toward the Mainland. While its strategic position make that Saint-Louis has the characteristics of a sea and River City, the presence of the river and the Ocean has been a constraint to its urbanization, since the place is subject to frequent flooding.

We can say that the city of Saint Louis is fragmented by the presence of the River into three parts: "la Langue Barbarie" westward, constituted by a spit of sand of 300 meters wide that separates the River from the Atlantic Ocean, which takes contact 25 Km more to the South, and it settled districts of fishermen (district of Goxxumbace, Ndar Tout and Guet Ndar); "the island of Ndar in the Centre, it is the current island of Saint-Louis in Senegal⁴, a narrow island just 2 kilometres long by 400 meters of width that is formed naturally by sedimentation, it is the heart of the old colonial city, owner of the heritage value of UNESCO; and "island of Sor" to the East, even though it is located in the continental area, receiving the nomination of island because it is surrounded by tidal marshes in times of flooding of the river Senegal.

¹ Currently, 10% of the country's population is concentrated in the Saint-Louis region.

² At the head of each Region there is a Governor and a Regional Assembly, and at the head of each Department there is a Prefect. The State maintains the supervision of all levels of the administration. The 1996 Decentralization Act reinforces the responsibilities and competencies of local communities and organizes the Senegalese territory in 11 regions, 60 departments, 43 districts and 320 rural communities.

³ The Senegal River is about 1,790 kms. long and was born in Guinea, in the Fouta Djallon plateau, with the name of Bafing River. After joining the Bafing with the Baoulé River, it is when already receives the name of Senegal.

⁴ She was baptized with this name by the French, in honor of the King of France "Saint Louis" and also, by being his ancestor of the reigning sovereign Luis XIV. 2



Figure 1 - Bird view of Saint Louis fragmented into three parts by the presence of the Senegal River at its mouth

It is in these lands where sits most of the population of Saint-Louis (districts of Sor Nord, Darou, Balacoss, Diamaguere, Leone-HLM, Eaux Claires/Diaminar, Ndioloffene Sud and Pikine) and where the city grows without hardly a planning intervention. New neighbourhoods (barrios of Khor, Bango and Ngallele) that have settled in the Mainland firm, where do not have reach the river floods have also emerged in recent years.

The island of Saint-Louis in Senegal holds an exceptional urban heritage value awarded by the Organization of the United Nations in the year 2000, on the basis of II and IV criterion. And the Langue de Barbarie and the border area with the Island of Sor beside the river are considered protected areas.

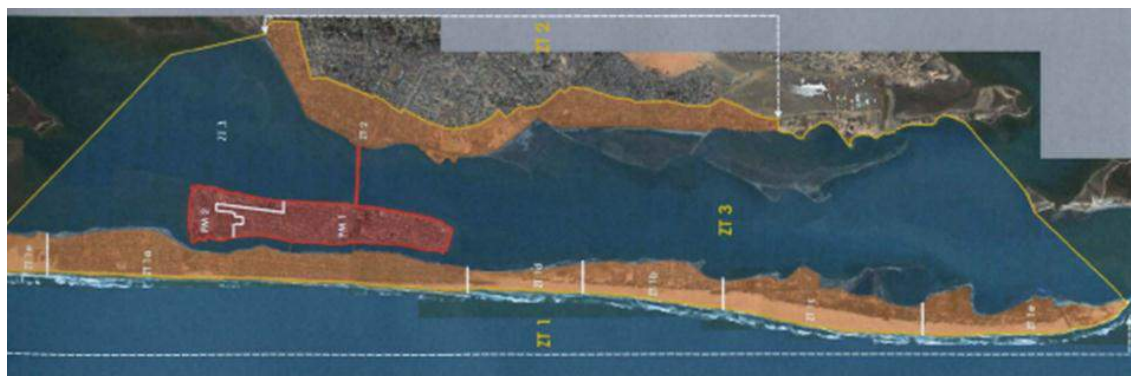


Figure 2 - Delimitation of areas classified by the UNESCO: the red zone is the area of heritage value, and the Orange area is protected area.

The Commission of the UNESCO determined that it deserved inclusion in the World Heritage list because "the historic town of the city of Saint-Louis exhibits an important interchange of values and influences on the development of education and culture, architecture, handicraft and services in much of West Africa" (criterion II), and because "the island of Saint-Louis ancient capital of West Africa, is an excellent example of colonial city, characterized by its particular natural environment, and illustrates the development of the colonial Government in this region"(criterion IV).

But better to understand the growth and the urban transformation of the city of Saint-Louis, it is necessary, as if it were a palimpsest, reveal about the current city, and the evolution from its origins. It is occupation and colonial origins.

3 MATERIALS TO ANALYSE

Its location has always had a great interest for Europeans a logistical point for trade in slaves with Cape Verde. Initially it was occupied by the Portuguese, then by the French, although on several occasions and

temporarily it happens to be occupied by the English, but the island definitely becomes French colony, and the French, who built in 1659, are the first "Fort of Saint Louis". Therefore, that date is regarded as the founding of the city.

A morphological analysis of the city of Saint Louis, following the social events and demographic growths that have driven the rate of urban growth, will allow us to reason about the phenomena that have led to the development of its evolution and landscape and urban entities by stage of growth.

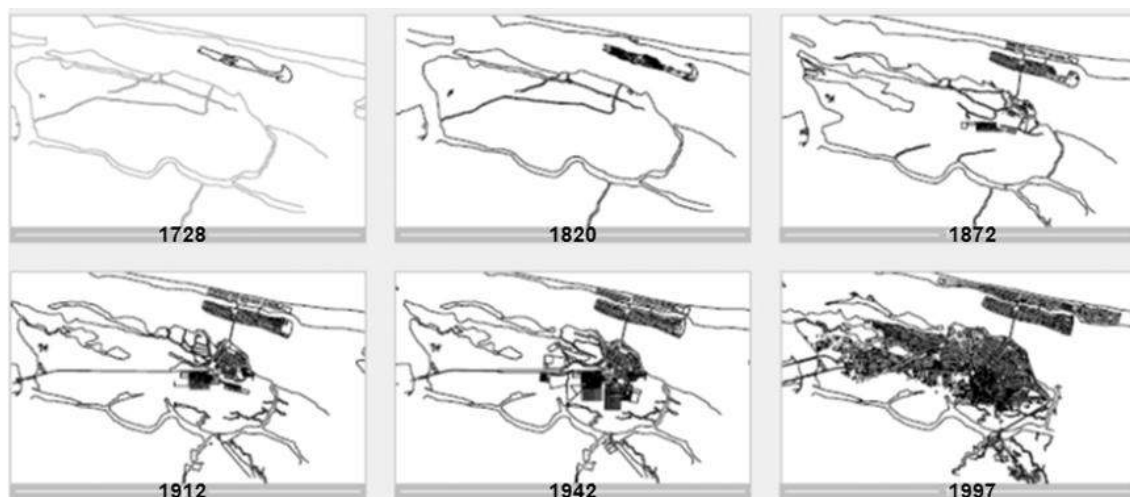


Figure 3 - Evolution of urban growth of city Saint Louis of Senegal. (Source: Inventory of the Architectural and Urban Patrimony of the island of Saint-Louis of Senegal. École d'Architecture de Lille)

Since the mid-17th century to the middle of the 18th century, the island is characterized by urban growth environment to military construction¹, which is the main solid construction of the island, being bordered North and South by domestic buildings organized according to a regular grid and built mostly with straw and reeds, and only some few in masonry. To the East and West of the military construction space will be free of buildings, located to its West, the Plaza de Armas (the current Plaza Faidherbe)². By that time, the city of Saint Louis consists of only a score of houses and it is inhabited by around 5,000 people.

The city of Saint-Louis lives the golden age of the colonial administration during the nineteenth century. After being occupied again by the English, between 1809 and 1817, the island definitely becomes a French colony. The city of Saint Louis is located, in those moments, has not already only military equipment, but also of public and religious facilities, and gradually will occupy a greater extension of stable land on the island of Saint Louis. With the first abolition of the slave trade, in 1815, the island of Saint-Louis changes its initial commercial activity by the trade of arabic gum, which will play an important role, over commercialization of leather, wax, ivory from the islands of Ivory Coast or gold from Galam.

The Senegal River makes this city an important port centre for the Atlantic trade and a natural departure gate. In general, the Senegal River is navigable at all stations in 175 kms. stretch from his contact with the ocean to the small town of Podor³ and at times of high water, around three months of the year, to Kayes, 975 kms. from the mouth. All this favours an important colonial trade with an increase in the transit of ships. This new commercial activity generated an increase of the local population, while growth is slow and irregular. 5,000 inhabitants in 1790, it passes to the 12,000 in 1848, representing a population increase of only 7,000 people in 58 years (in more than half a century). This slow population growth is due to the epidemics of yellow fever, which often decimate the population.

But already in 1829, the administration consider that is necessary to regulate the growth of the city through the drafting of the first "alignment Plan" of the island of Saint-Louis, although only became partially applied. This fact makes a great wave of urban works with the need to build public services such as the layout of

¹ This military construction will continue to be expanded throughout the eighteenth century.

² Louis Faidherbe was formed as a military engineer and served in Algeria and Senegal before becoming the colonial Governor of French Senegal between 1854-1861 and 1863-1865. He is considered the founder of the colonial empire of France in Africa.

³ It is located 215 km east of Saint Louis, and with 10.173 inhabitants registered in the year 2006

streets and discharge zones. The buildings will begin to run already in solid form, and even many of native dwellings, which were initially built with straw and reeds, are replaced by new constructions executed with masonry.

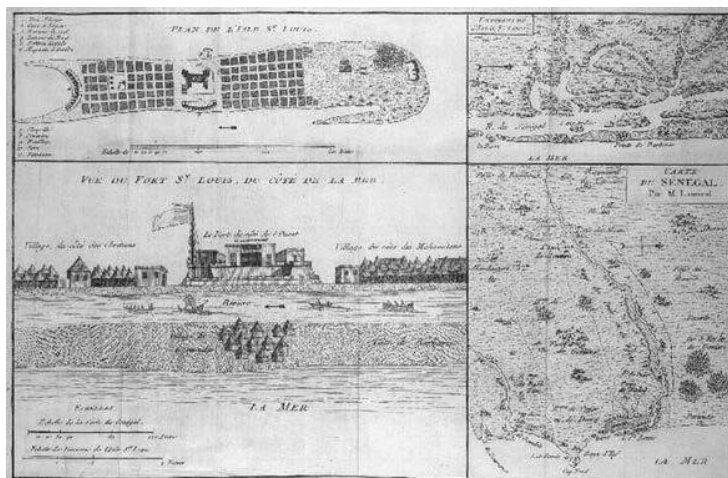


Figure 4 - Plan of alignment in Saint-Louis de Senegal, 1829. (Source:gallica.bnf.fr)

At this time, the small size of the island, 2 km long and 400 meters wide, forced the population to leave their physical limits and to occupy the edges of the Senegal River, thus forming the first suburbs of the city. The suburbs of N'Dar Toute y Guet Ndar in the Langue de Barbarie, where fishermen were settled and the suburbs of Sor Nord y Diamaguène in island of Sor, on the Mainland. All of them were connected with the island of Saint-Louis through three bridges, which were built between 1856 to 1865. The Moustapha Malick Gaye bridge and the Geôle bridge (which currently only support struts) connecting the island of Saint-Louis with the tongue of sand of the Langue de Barbarie, and casting Faidherbe bridge will allow the expansion of the city towards the Mainland. This bridge, built in steel, is also recognized as UNESCO World Heritage. The grounds of the Langue de Barberie were occupied by the fishing community, given that this spit of sand located on the border between the Atlantic Ocean and the River, makes it the ideal place to develop the artisanal fishing, most important economic activity of the city, and that both women and men are engaged. The fishing community of Saint Louis is one of the most important in West Africa and currently comprises more than 4,000 crews. Guet Ndar is the District of fishermen where today more than 36,000 people live in overcrowding on a narrow spit of sand, which develops a dynamic and energetic activity: the fishermen arrive with their catch while dozens of trucks waiting to buy fish and transporting it to inland as to Kaolack, Mali and Tambacounda. Another part of the catches are given to women who are engaged in smoking-drying fish on the shore. Construction and repair of boats and fishing nets, activity also takes place on the beach in Saint Louis, where it is possible to see almost all the stages of construction of the Senegalese fishing boats.



Figure 8 - The typically Senegalese scene in which women engage in dry fish along the shore. (Source: personal picture)

Another important fact that will have impact on the expansion of the city of Saint Louis and its growth toward the continental zone (sister island), is the construction of a railway station that will connect various parts of the colony, allowing travel and transport materials in much shorter time. This is the way how it has created an infrastructural continuity as strategic point and location for the supply of goods to and from the island of Saint Louis. On the outskirts of this point, Sor-Nord district and station, which is located at the entrance of the Faidherbe bridge, where will focus higher density of population, that constituting the District of Diamaguene¹. On the other hand, should take into account that, in those moments, the French were doing great works of engineering world in order to expand his empire, such as the opening of the Suez Canal in 1869, promoted by Frenchman Ferdinand de Lesseps.

The installation of large railroads and the expansionist desires of France, led to build in 1885 the railroad which connected Saint Louis with Dakar, and subsequently Dakar with Niger². The construction of this railway subtracted the role of main road of transport and communication, which had been so far to the Senegal River. The city of Saint Louis, well equipped in infrastructure and very well communicated, becomes political, economic and intellectual capital of Senegal and Mauritania. Head of a hierarchical network of military posts and lines of communication, Saint Louis experienced a considerable growth in 1895, becoming the capital of the French Africa-occidental³.

In the 20th century is produced a demographic expansion and modernization of the city⁴. The progress of medicine involve a population growth which is reflected in the decrease in the infant mortality rate and an improvement in sanitary and food conditions. Between 1930 and 1940, the population has now reached the figure of 36,000 inhabitants, and will continue to growth despite the significant number of men sent to the front during the second world war. In the year 1942, it writes by L.H. Hoyez, "Plan for Expansion, development and improvement of Saint Louis", in which projected paths of the last large areas of the continental zone. However, from 1957, the competence of Dakar as the new capital of Senegal is felt to the detriment of Saint-Louis, who undergoes a small demographic decrease, compared to Dakar, whose population is quadruples.

In 1970 the perimeter of the city has multiplied by three, and the continental zone, given that it has the necessary land, has become the main area of growth of the city, despite the bad conditions of this muddy field. Saint Louis is a city that already has 81.204 inhabitants, in contrast to the 36,000 who had in 1940. This growth is due to migration flows and the strong rural exodus that throughout the 1970s intensifies drought and the limits of the city makes more spontaneous than volunteers.

While the "Plan Director of conditioning and planning" is written in 1975 (Le Schema Directeur d'Aménagement et d'Urbanisme [SDAU]) to manage the development of the city, this will not have any impact on the management and regulation of the territory. This Master Plan proposed an increase of the extension of the communal perimeter of 12,800 hectares and an urban extension to Ngallèle, but the growth of this town is at the moment little accepted.

4 DETERIORATION OR DISAPPEARANCE

In the 21st century the city of Saint Louis will experience an exponential increase of its population growth, bringing together at the edges of the city constructions without any control of their growth, as opposed to the regular tracing inherited from the colonial era.

¹ See the dissertation of Daye Mamadou Sow, "Les transformation urbaines dans les villes du sud;" «L'exemple is Saint Louis du Sénégal». (2005) Université de Toulouse - Le Mirail

² The railway network in Senegal, in the beginning very developed, has been deteriorating gradually and there are now only two lines of travelers: the Dakar-Thies autorail and the commuter train, which offers a regular service between the station of Dakar and Rufisque. This train is known as "the little blue train".

³ Between 1895 and 1958, the French Africa-occidental (A.O.F.) was a Federation of eight French colonies in West Africa, with the aim of coordinating the colonial occupation of France on the African continent under the same authority. It was formed by Mauritania, Senegal, French Sudan (now Mali), Guinea, Côte d'Ivoire, Niger, Alto Volta (now Burkina Faso) and Dahomey (now Benin).

⁴ In the 20th century, Africa enters a phase of conquest and Saint-Louis becomes Centre military from all over West Africa, materialized by its main square and bordered by the most important military buildings of the city.

Zones	Equipment and urban facilities
Island of Saint-Louis	52 %
Langue de Barbarie	13 %
Continental zone (Sor)	35 %

Table 1 - Equipment and urban facilities. (Source: Plan Directeur d'Urbanisme (PDU) de Saint-Louis 2000-2025)

For a correct analysis, it is necessary to oppose the "urban facilities" look, the existing in each of the area's population burden:

Zones	Population in 2000: Inhabitant	%
Island of Saint-Louis	14,022	9 %
Langue de Barbarie	36,652	25 %
Continental zone (Sor)	98,806	66 %

Table 2 - Population in 2000. (Source: Department of Public Safety (DPS) de Saint-Louis)

The low population of the island of Saint-Louis (with only 9%) accompanied by the highest percentage of equipment is explained by the unemployment of many buildings that are dilapidated, and fundamentally, by the fact that in this area the majority of the buildings are administrative buildings or have commercial use, when they are not the second homes of senior officials who have their primary residence in Dakar, and which do not come to be regarded in the population census of Saint-Louis.

Urban growth, combined with poor flooded and swampy terrain, translates into an explosion that fragmented the continental zone in 11 districts (2/3 of the 16 total).

Zones urbaines	Quartiers	Population	Superficie (ha)	Densité
Langue de Barbarie	Goxxumbacc	9680	22,37	434
	Ndar Toute	7576	15,70	482
	Guét Ndar	18685	15,85	1179
	Ensemble	35.941	53,92	667
Ile de Ndar	Nord	8768	39,65	221
	Sud	4115	12,87	320
	Ensemble	12883	52,52	245
	Sor Nord (Diawling/Marnéal)	9557	41,97	228
	Darou	6553	22,52	291
	Balacoss	4902	29,21	168
	Diamaguène	8976	27,13	331
	Léona-HLM	12717	60,13	211
	Eaux Claires/Diaminar	6933	39,66	174
	Ndioloffène Sud (Médina-Courses)	12176	136,12	89
	Pikine	30820	184,11	167
	Ensemble	92634	540,85	171
	Périphérie	Khor	1996	24,45
Bango		3473	38	91
Ngallèle		1015	19,46	52
	Ensemble	6484	81,91	89
Ensemble (Saint-Louis)		147942	729,20	203

Table 3 - Population density of Saint Louis City. (Source: Agence de Développement Municipal (ADM) de Saint-Louis)

The density of each neighbourhoods shows the unequal distribution of the population in the urban space. As the urban front moves, the grounds of the continental zone are increasingly more inhabited, complying to the East a peripheral semi-corona on the island of Sor, which is characterized by irregular occupations that are built on areas that are inundated by the flooding regime of the Senegal River, which begins in July and which are greatest in October and November producing floods around 1.35 meters above the sea level.

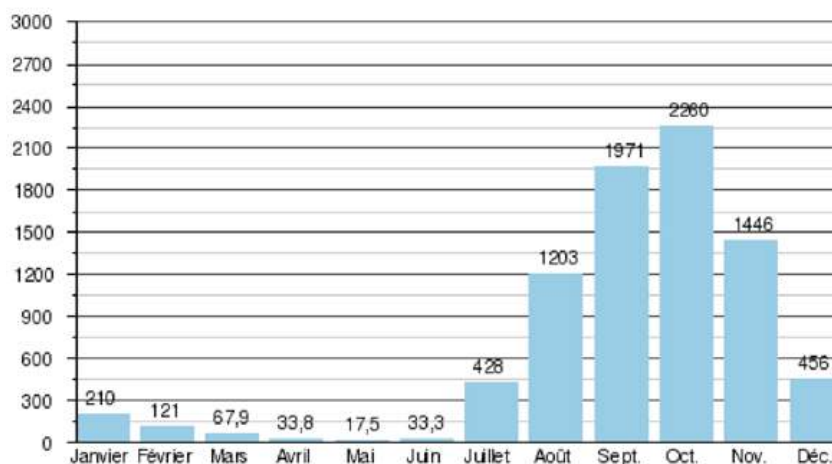


Table 4 - The average monthly flow in m³/s for a basin of 268,000 km², measured in hydrological station of Dagana. (Data obtained from the periods 1903-1974)

On the contrary, during the great drought, the flow is so low that, sometimes, it may even to wade the river. It is when the population without access to housing, raised in these areas improvised housing units that are destroyed by water when the river returns to its maximum runway. The problem financial and mortgage security prevents access to housing many families without resources, which self- construction their homes on land that just calls them the river. Currently, these floods are partially controlled thanks to the construction of the Maka-Diama dam, built 150 Kms. up and waters at an altitude of 1 meter above the sea level, on the border between Mauritania and Senegal, near the mouth to the sea, which prevents access from saltwater upstream, which caused the sterilization of the agricultural soils when they flooded¹.

5 DISCUSSION AND CONCLUSIONS

The truth is that the urban crisis, a reflection of an economic but also financial crisis of the State, is marked by a decline in socio-economic indicators and a degradation of the conditions of habitability and health of their inhabitants, in a country where the management of cities is marked by the predominant role of the administration of the State, against local authorities.

It is very important to remember that Senegal is a presidential Republic and although it works democratically, being in this regard recognized as one of the countries with more successful and rooted in African culture, the local administrators are appointed and accountable to the President², and representatives of the State will continue under responsibility at all levels of the territorial administrations.

It can be said that the territorial organisation of the State has inherited a very centralized configuration, in which there is a high degree of administrative centralization in the management of the public sector, both at the level of financial resources and the realization of all kinds of tax procedures (administrative charges, opening of premises licences or other facilities, etc.) also contributes to what the fact of the spatial concentration of foreign companies in the Dakar-Thies environment.

It is very important to remember that Senegal is a presidential Republic and although it works democratically, being in this regard recognized as one of the countries with more successful and rooted in African culture, local administrators are appointed and accountable to the President, and representatives of the State will continue stewardship at all levels of the territorial administrations. However, gradually, from the 90`s will be to produce a series of institutional reforms in Senegal, which will lead to the decentralization of the State, strengthening the management capacity of local institutions. Although the economic resources of Saint-Louis in Senegal are still based in coastal fisheries, livestock and agriculture, and despite the efforts of modernization, the primary sector remains, today, very little productive.

¹ The river has two large dams along its course: the dam of Manantali in Mali, built on the Bafing River between the years 1981-87 as a reservoir (Lake Manantali, 477 km² of water surface); and the aforementioned Maka-Diama dam.

² In the spring of 2012, there were presidential elections of Macky Sall was then victorious. This election, peaceful and democratic, were greeted by the EU (among others) as a sign of maturity, since its opponent (former President) Wade wanted a continuity of dubious legality.

Coinciding with the 90's (under the rule of the Socialist Party of Diop) a new era of urban management will start in the city of Saint Louis, propitiated by the new powers which acquire regions (so far only in State hands), and among which is the responsibility of the urban management of its territory, which will foster citizen participation through the new local authorities. In this sense, the "Programme of strengthening and support to the development of these neighbourhoods" initiated the development and implementation underway a "Plan of development of neighbourhood" (PDQ), which marks the priority projects and acts as a pedestal from which, the actions of development are identified, to be subsequently performed.

However, the reality is in the case of Saint Louis, as well as in many other communities, the room for manoeuvre they had on their territory was shoestring, lacking the financial, human and technical resources to deal with new responsibilities, mainly those derived from the management of their territory. It should not be forgotten that one of the basic characteristics of the Senegalese economy is one that is called "informal" with a basic structure which is composed of an average of 2.9 workers, usually within the same family.

According to a survey conducted by the "Directorate of Economic Statistics and Compatibility", this economy is formed by 48.8% of the active population (working 2,216,617) that supports the 35.8% of all non-agricultural production. Own Saint Louis resources consist of the revenue that it can raise through local rates, which are decreasing due to the impoverishment of the population. But to this fact, it must be added to the absence of a fiscal cadastre allowing measuring the potential benefit of taxable activities and that they could improve municipal revenues, since many taxes are not always collected¹.

On the other hand, we must be aware that while the communes acquired new skills, also assume the costs of its operation. If you look at the investment of your budget, we appreciate how between 70-80% per year goes to the performance of his administration, making it impossible to invest in equipment or basic urban infrastructures, and even has no ability to maintain in good condition the existing. This is due, inter alia, not only a poor management but a weak local financial capacity and remarkable retardation of transfers from the State. The consequence is that, despite programmes of decentralization and the existence of local financial organizations supported by State, competences transferred to the regions in spending are notoriously inadequate and scarce, which, moreover, gradually decrease down between communes and rural communities, who are obliged to tip over towards the informal economy.

What does highlight do, before the concept of "decentralization" of recent years, there has been an awareness citizen participation, and the creation of a "Cell of coordination, information and entertainment for Local development" (CCIADL), which has become the "Agency of communal development" (ADC), and the creation of the "Programme of strengthening and support to the development of neighbourhood"(PRADEQ)², and in the "Program of animation Social urban" (PASU), which aims to fight poverty (improving the living conditions of the population of the districts), support the self-promotion initiatives at work in the neighbourhoods of the city and involve all relevant partners and associative movements in the management of this neighbourhoods.

However the reality is that due to its weak economic engine, the commune of Saint-Louis runs out of capacity investment, and needs the help of State investments or foreign partners. Should be noted serious deficiencies in infrastructure, both of a general nature: progressive isolation, poor accessibility, poor conditions on roads, disappearance of the railways and its airport downtime, as in the urban nature: widespread poor health, inadequate sanitation and supply of electricity and water, etc. And, in the aspect of human capital, lack of programs both basic and professional education at all levels, inadequate level of training and lack of development of marketing actions in activities that, like the tourist, could mean an improvement substantive for the population and its own habitat.

Ultimately, there is a lack of State investment as well as lack of local financial autonomy that runs the risk of becoming endemic. Therefore, the fact that "The communes acquired new skills in the management of its territory, favoured by a decentralization", it is nothing but a fallacy, given that it has no power to act.

¹ According to the program of development community (PDC) 1998-2008, "in the absence of a precise knowledge of the available resources, the budget of the commune represents less than 1% of the wealth produced by the local economy, valued around 58 million CFA francs".

² Programme de Renforcement et d'Appui au Développement des Quartiers

In this situation, the existence of a heritage of UNESCO, and even a few natural resources likely to regain a significant role of this commune, this city, and even the island of Saint Louis, seems to have a difficult prognosis¹. The recovery of a historical heritage worth to be taken into account such as the island of Saint Louis, suffer the negative consequences of a very negative economic and social context. In part, as mentioned, by factors exogenous, characteristic of the political and economic organisation of the country and, in part, by endogenous factors, such as the progressive degradation of the urban heritage that sustains a population without resources. Buildings in ruins, streets without the minimum necessary infrastructure, low-income housing and very limited equipment. All this suggests what policies would be necessary apply for the restoration of a heritage of humanity gradually sinking into oblivion, well by the resources of the country and through international cooperation programmes.

BIBLIOGRAPHIC REFERENCES

DISKHATE, Mouhamadou Mawlou (2011): L'aménagement du territoire au Sénégal: principes, pratiques et devoirs pour le XXIe siècle. Paris: L'Harmattan.

FALL, Mouhamedoune Abdoulaye (2011). Saint-Louis deu Sénégal: et si le développement n'était qu'une chimère? Paris: L'Harmattan.

LAURENT, Alain (2009). Tourisme responsable, clé d'entrée du développement territorial durable: Guide pour la réflexion et l'action. Collection Comprendre La Societé. Lyon: Chronique Sociale.

MARTINEZ, Lucía, et al. (2014). Cooperación interuniversitaria en la ordenación del turismo sostenible: Senegal, Cabo Verde y Canarias. Las Palmas de Gran Canaria: CUCID-ULPGC.

MASURIER, Didier (1998). Hôtes et touristes au Sénégal: Imaginaires économiques et relations touristiques de l'exotisme. Paris: L'Harmattan.

SY, Zeyni El Abidine (2009). Géographie urbaine de l'insalubrité: Le cas de Saint-Louis du Sénégal. Paris: L'Harmattan.

ID 1492 | THE STREET FOOD MARKET, TO BE OR NOT TO BE? A STUDY OF DIFFERENT GROUPS' INTEREST DIALOG BEHIND INFORMAL URBAN SPACE

Mingming Zhu¹; Siyuan Tang¹; Qixuan Wang¹

¹Tongji University

fzhuquangfu@163.com ; 1244557321@qq.com

ABSTRACT: Street food market was the major business form in Shanghai, in which food, vegetables and fruits are sold. But by the end of twentieth Century, after the government management is centralized and moved indoors, the street market within urban area mostly disappeared. But before long, street food markets of all sizes came into being again, creating a typical irregular space in Shanghai. Especially in the bustling city center, there are still many street food markets despite of the prohibition. This phenomenon is attracting more and more attention from media and public. Why can the street market exist in a contradictory status messy, traffic impacting but full of vitality and natural livelihood? Why is the street market loved by some on one hand, and is despised by others simultaneously on the other hand? Whether the government should extinct the street market or let it be? This paper selects Taiwan Road food market, located in the East Nanjing Road Commercial District in the city center, as an example, focusing on the interests of the game behind the street food market. First, the market's physical space is surveyed, and the

¹ Another highlight is that Senegal and Mauritania have put their efforts in common and created a Board of protection and conservation of the delta of the Senegal River, in the years 1970 to protect its rich flora and varied fauna, resulted from the many marshes and Islands that make up the mouth, where there are several natural parks which currently form a great refuge for birds. In the area we find the National Park of the birds of the Djoudj, located about 60 kilometers north of Saint-Louis; the Diawling National Park, on the other side of the river and the border with Mauritania; and in the same mouth Senegalese national language of Barber Park is now also.