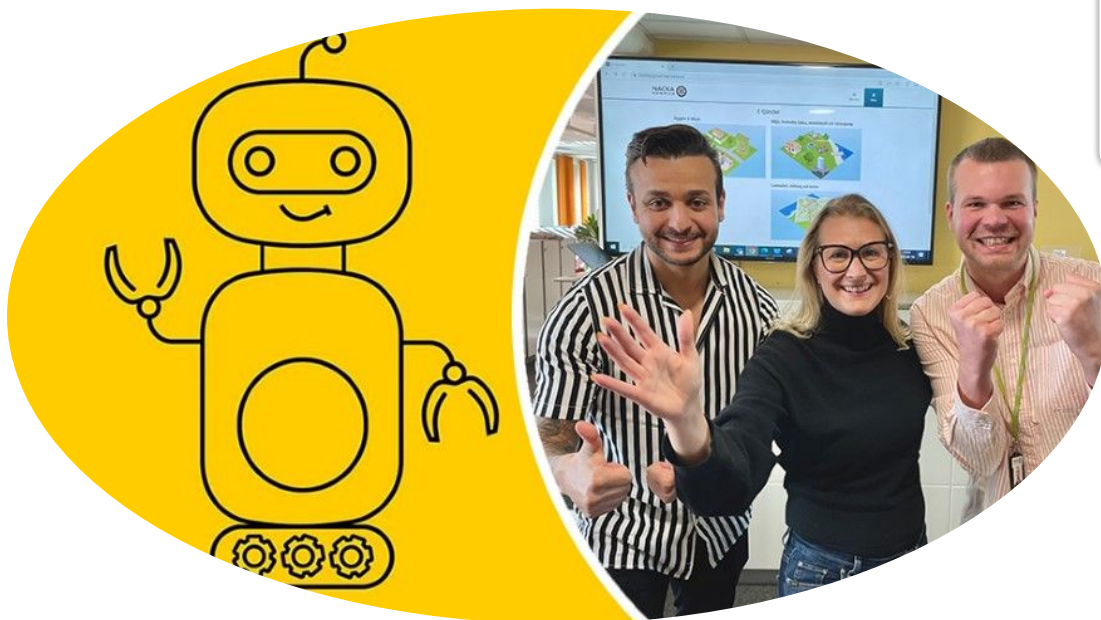




Attention economics, artificial intelligence, and the future legitimacy of the planning profession

Jonathan Metzger, Professor of Urban & Regional Studies
KTH Royal Institute of Technology

Say hi to Lovisa!



Nacka först igen: Helautomatiskt beslut inom bygglov

31 JANUARI 2024 KL 17:31

I somras blev Nacka första svenska kommun att automatisera ett beslut i bygglovsprocessen. Utfallet har varit 100-procentigt korrekt, så nu tas nästa steg med att helautomatisera två olika beslut.



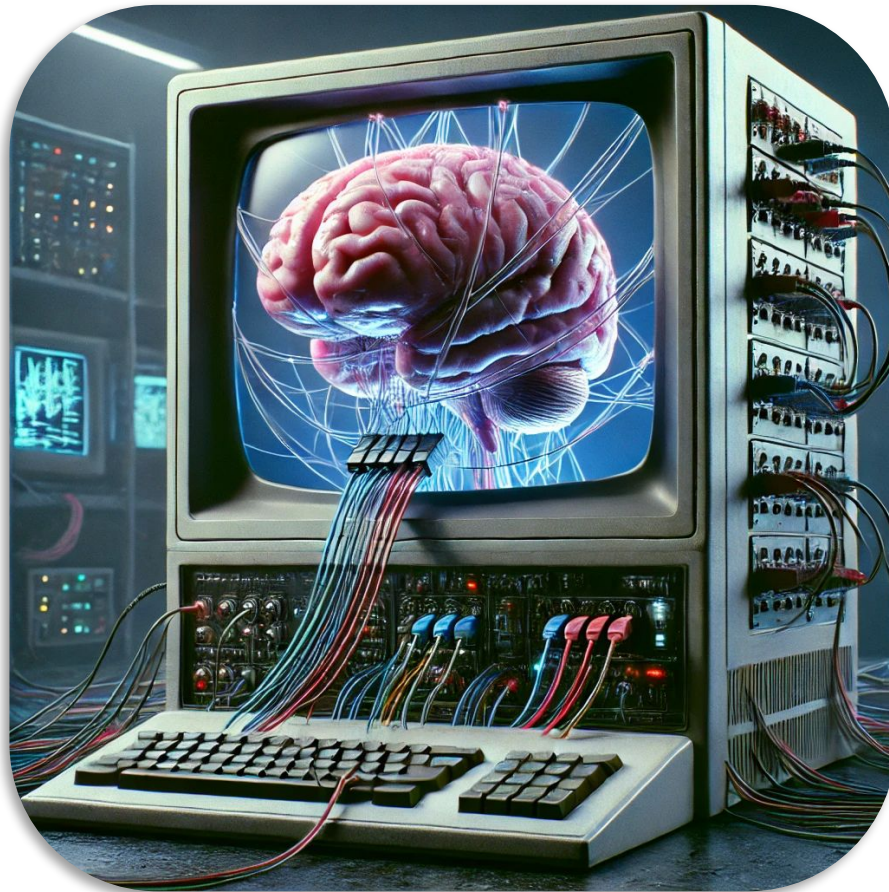
Rekordsnabba beslut inom bygglov - fler automatiserade beslut

13 NOVEMBER 2024 KL 17:54

I Nacka kommun fortsätter utvecklingen inom automatiserat beslutsfattande genom att nu låta en robot fatta beslut i ytterligare tre ärendekategorier. Därmed fattas automatiserade beslut i e-tjänster inom fem vanliga ärendetyper, vilket medför att 26% av besluten kan fattas på bara några minuter, istället för att ta dagar eller veckor.



Artificial intelligence



...or: syntegetic competent (?) attention

Competent attention
=
[time]+[competence]+[engagement]

The economics of attention

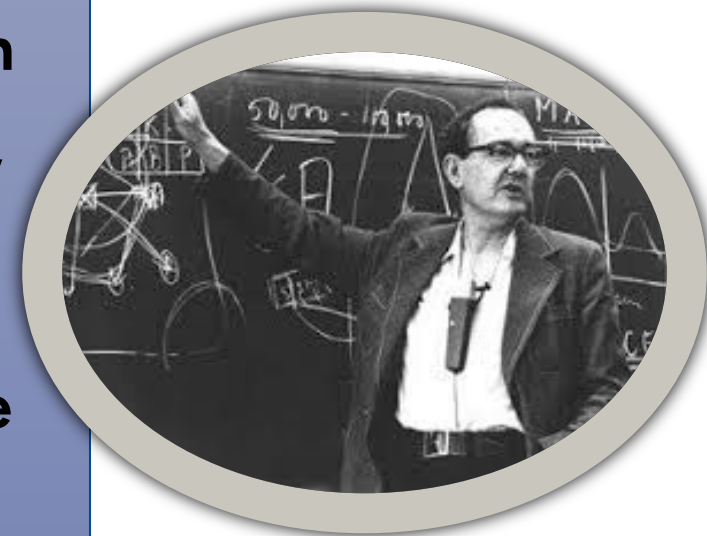
Herbert Simon

Designing Organizations for an Information Rich World (1971)

“In an information-rich world, the wealth of information means a dearth of something else: a scarcity of whatever it is that information consumes. What information consumes is rather obvious: it consumes the attention of its recipients.

Hence **a wealth of information creates a poverty of attention** and a need to allocate that attention efficiently among the overabundance of information sources that might consume it”

“How can we design organizations, business firms, and government agencies to operate effectively in such a world?
How can we arrange to conserve and effectively allocate the scarce attention?”



The promise of AI as an attention-economizing device?



Or





ChatGPT



Grok



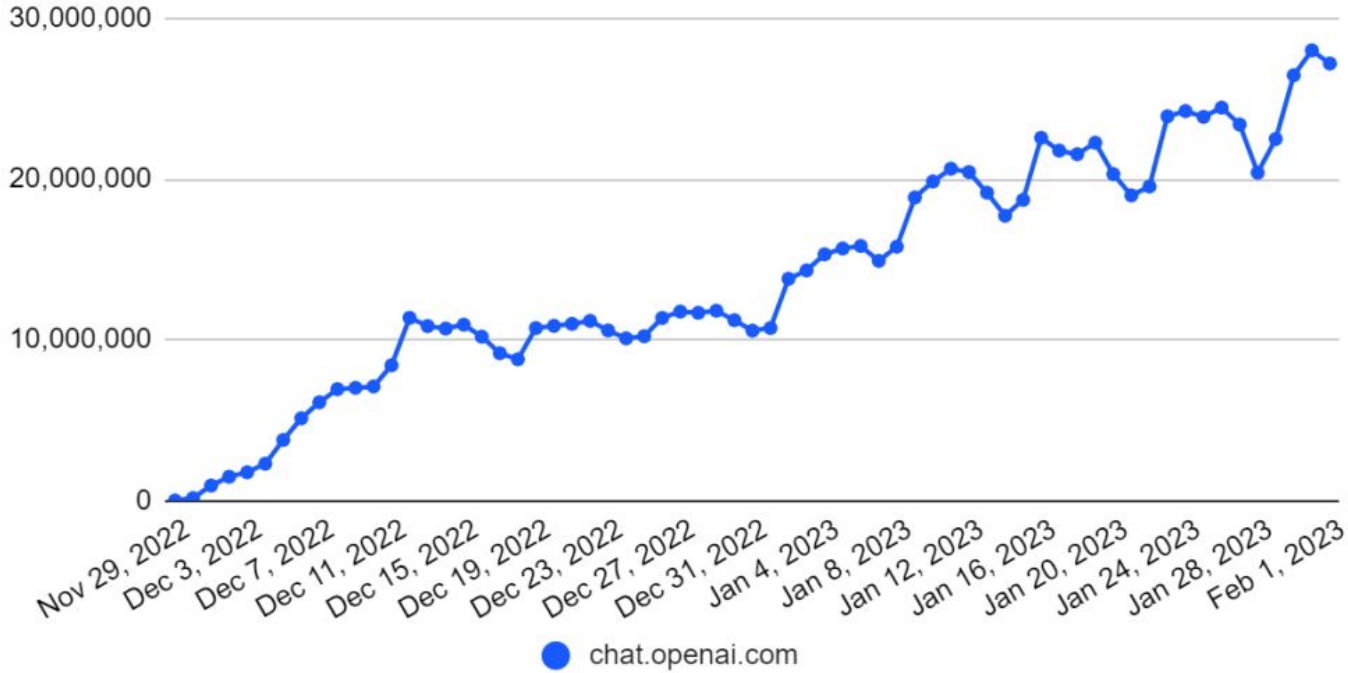
deepseek



Claude

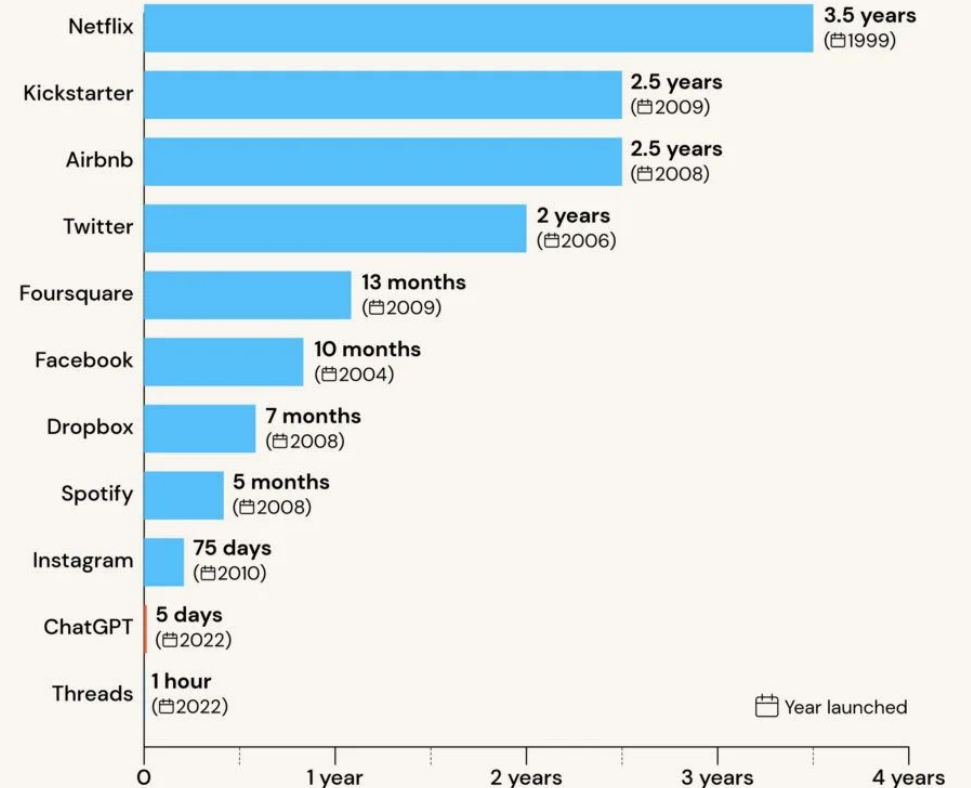
ChatGPT

Daily Visits, Desktop & Mobile Web, Worldwide



CHATGPT STATISTICS

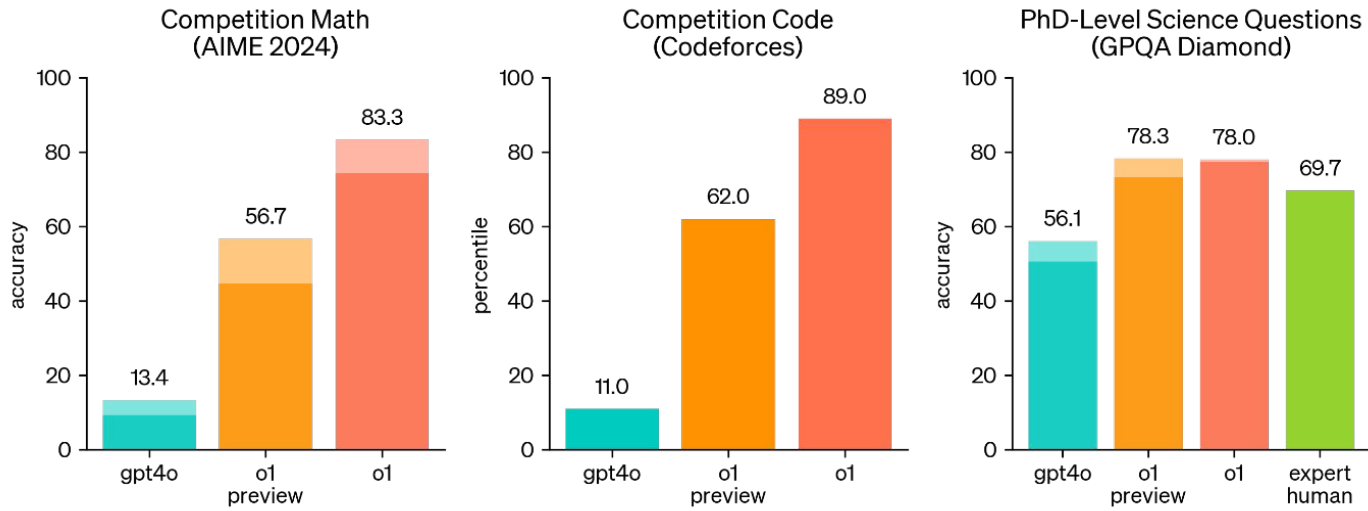
Time to reach 1 million users



Read the full report at tooltester.com/en/blog/chatgpt-statistics



OpenAI models' performance



o1 outperforms PhD level humans in chemistry, biology, physics

Image source: OpenAI

Research articles

GPT-4 passes the bar exam

Daniel Martin Katz, Michael James Bommarito, Shang Gao and Pablo Arredondo

Published: 26 February 2024 | <https://doi.org/10.1098/rsta.2023.0254>

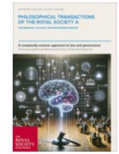
Abstract

In this paper, we experimentally evaluate the zero-shot performance of GPT-4 against prior generations of GPT on the entire uniform bar examination (UBE), including not only the multiple-choice multistate bar examination (MBE), but also the open-ended multistate essay exam (MEE) and multistate performance test (MPT) components. On the MBE, GPT-4 significantly outperforms both human test-takers and prior models, demonstrating a 26% increase over ChatGPT and beating humans in five of seven subject areas. On the MEE and MPT, which have not previously been evaluated by scholars, GPT-4 scores an average of 4.2/6.0 when compared with much lower scores for ChatGPT. Graded across the UBE components, in the manner in which a human test-taker would be, GPT-4 scores approximately 297 points, significantly in excess of the passing threshold for all UBE jurisdictions. These findings document not just the rapid and remarkable advance of large language model performance generally, but also the potential for such models to support the delivery of legal services in society.

This article is part of the theme issue 'A complexity science approach to law and governance'.

Details References Related Figures

This Issue



15 April 2024
Volume 382, Issue 2270

Theme issue
'A complexity science approach to law and governance'
compiled and edited by Daniel M. Katz, J. B. Ruhl and Pierpaolo Vivo

Article Information

Back to

GPT4 passes the US bar examination

Improve this park!



The brief/prompts:

- 1) *Present five types of design interventions that can make the proposed park depicted in the image more attractive to visitors while also corresponding more closely to the CPTED principles. Discuss the pros and cons of the proposed changes.*
- 2) *Apply the suggested principles to the design proposal. Suggest specific locations in the park that can be redesigned to better implement these principles, and how.*
- 3) *Suggest which of the above-proposed redesigns which may be achievable with a total additional budget expenditure of €100000 or less.*
- 4) *One edge of the proposed park contains a playground and an outdoor gym. There is also an interactive multiple-fountain water play area located within the park. Based on the principles used above (CPTED and visitor attractivity), do you suggest retaining the placement of these features within the park or relocating them to other locations in the park? If they are to be relocated in the park - to where? Please provide pros and cons for maintaining and/or changing the placement of each element.*

What is the displayed level of urban design/ CPTED competence?

Planning Theory essay- LLM > Park Design and CPTED of ▾

b) Group Seating Areas at Scenic Overlooks

- **Current Situation:** The park's open landscape could include slight elevation changes or water views.
- **Redesign:**
 1. **Small Picnic Groves:** Where the view is attractive—near a pond or a stand of tall trees—arrange multiple tables and benches in a semi-circle to encourage social interaction.

2 Planning Theory essay- LLM > Park Design and CPTED of ▾

4. Recommendations

Given the existing designs for **Årstafältet**, **retaining** the southwestern playground/gym and the central fountain area often makes sense for these reasons:

1. **Balanced Park Activation:** The southwestern zone remains active with family/fitness amenities, while the central fountain draws people deeper into the park.
2. **Synergy with Planned Residences:** New housing on the southwestern edge benefits from nearby recreational facilities, encouraging daily use and increased surveillance.
3. **Highlighting the Water Theme in the Middle:** The interactive fountain near the pond maintains a cohesive "water zone," potentially becoming a landmark attraction.

However, consider these **enhancements** ↓

1. **Improve Lighting and Sightlines:** Ensure that paths connecting the southwestern playground/gym

Assessed level of professional competence by three urban design/CPTED experts:

1. Amateur
2. Recently graduate bachelor student
3. Recently graduated master student
4. Junior professional
5. Senior professional

Metzger, J. (2015). “Contested urban ecology: Knowledge, social order and hierarchy in environmental sustainability–planning in Stockholm.” *Geoforum*, 61, 85–94.

<https://doi.org/10.1016/j.geoforum.2015.02.003>

“In the article Jonathan Metzger examines how different epistemological perspectives and forms of expertise influence the planning of environmental sustainability in Stockholm.

Metzger highlights how various actors—including municipal authorities, researchers, consultants, and citizen groups—compete to define what “sustainability” entails and to legitimize their respective viewpoints and proposed measures. The article analyzes, among other aspects, how certain forms of knowledge are accorded greater value than others in decision-making processes, creating hierarchies and tensions concerning who is perceived as the most credible voice in planning contexts. It also demonstrates how different interest groups adapt their arguments to gain a stronger foothold.

Metzger contends that these conflicts over environmental knowledge and expertise are not merely about facts or research, but also about power, social order, and how the city’s development should be shaped. ”

Competent synthetic attention, yes – but enduring need for human expertise 'in the loop'





What are the labour market impacts?



EKONOMIPRISET 2024
THE PRIZE IN ECONOMIC SCIENCES 2024



Daron Acemoglu
Massachusetts Institute of Technology, USA

#NobelPrize

#NobelPrize

"för studier a

"for studies of

"for studies of

"for studier av hur institutioner formas och påverkar värd



United Nations | Department of Economic and Social Affairs



Division for Inclusive Social Development webinar Can We Have Pro-Human AI?

Speaker:

Daron Acemoglu
Massachusetts Institute of Technology

6 October 2023
10 – 11 am EDT

This talk
human d
technolo
commun
participa
direction
commun

This is b
industry
generati
engineer

Register now:
<https://bit.ly/48f7jLs>

register now:
<https://bit.ly/48f7jLs>



Science | Current Issue | First release papers | Archive | About | Submit ma

HOME > SCIENCE > VOL. 384, NO. 6702 > GPTS ARE GPTS: LABOR MARKET IMPACT POTENTIAL OF LLMs

GPTs are GPTs: Labor market impact potential of LLMs

Research is needed to estimate how jobs may be affected

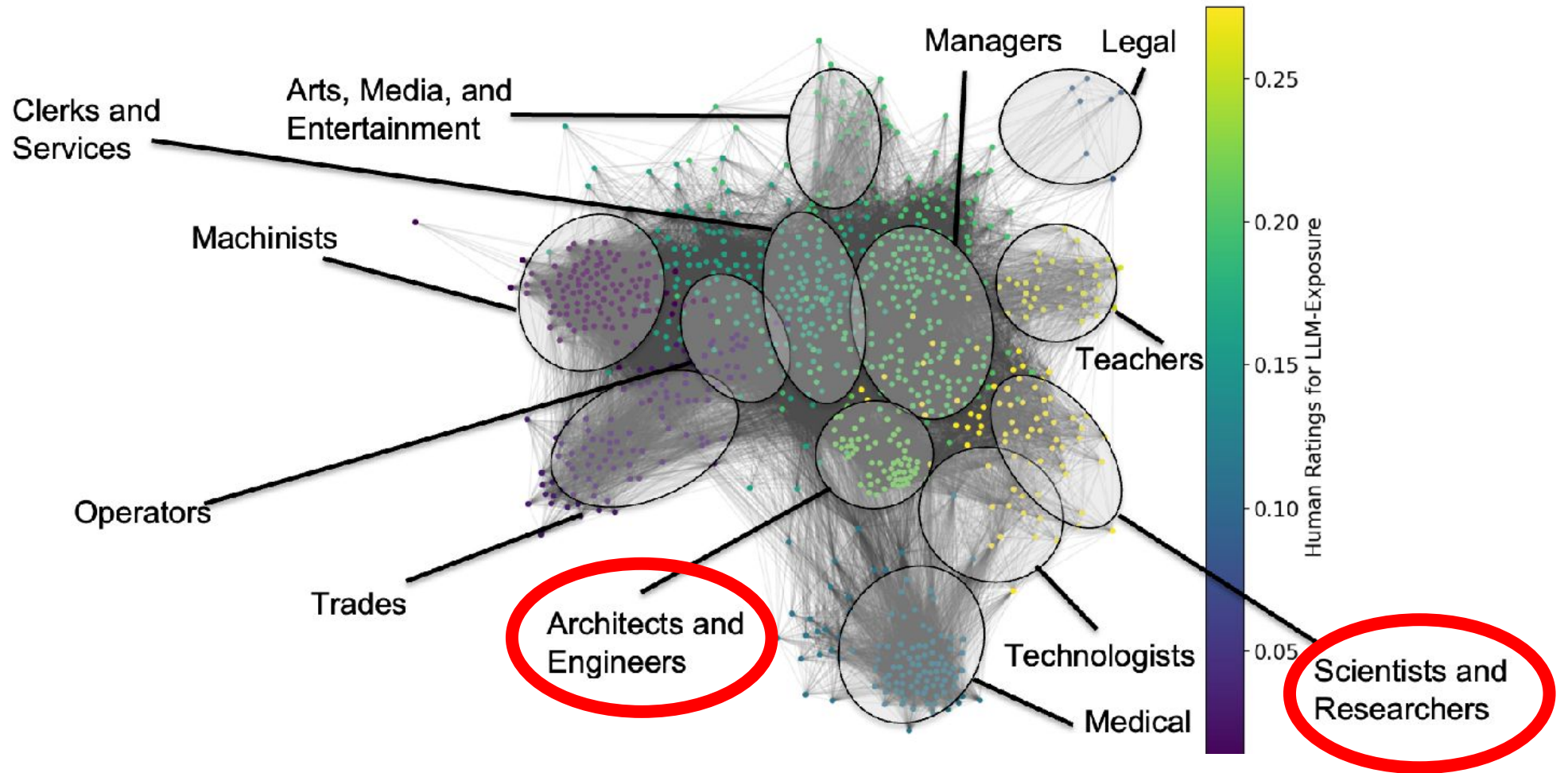
TYNA ELOUNDOLU, SAM MANNING, PAMELA MISHKIN, AND DANIEL ROCK | [Authors Info & Affiliations](#)

SCIENCE • 20 Jun 2024 • Vol 384, Issue 6702 • pp. 1306-1308 • DOI: 10.1126/science.adj0998

8 027 | 107 | [CHECK ACCESS](#)

Abstract

We propose a framework for evaluating the potential impacts of large-language models on work by considering their relevance to different occupations. By applying this framework (with both GPT-4 and GPT-4o), we find that roughly 1.8% of jobs could have over



Source: Eloundou et al, 2024, supplementary material, p 62



Q electrician Go

Urban and Regional Planners

19-3051.00

Updated 2025

Develop comprehensive plans and programs for use of land and physical facilities of jurisdictions, such as towns, cities, counties, and metropolitan areas.

Sample of reported job titles: City Planner, Community Development Planner, Community Planner, Development Technician, Housing Development Specialist, Neighborhood Planner, Planner, Planning Consultant, Planning Technician, Regional Planner

Tasks

Save Table: XLSX CSV

^ All 25 displayed

Importance	Category	Task
92	Core	Design, promote, or administer government plans or policies affecting land use, zoning, public utilities, community facilities, housing, or transportation.
90	Core	Advise planning officials on project feasibility, cost-effectiveness, regulatory conformance, or possible alternatives.
89	Core	Create, prepare, or requisition graphic or narrative reports on land use data, including land area maps overlaid with geographic variables, such as population density.
89	Core	Hold public meetings with government officials, social scientists, lawyers, developers, the public, or special interest groups to formulate, develop, or address issues regarding land use or community plans.

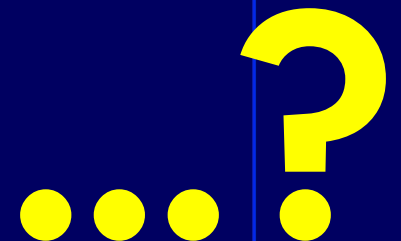
Analysis of O*NET occupation 19-3051.00 "Urban and Regional Planners exposure to automation by LLM, based on revised Eloundou et al, 2024 methodology

- Overall Weighted Exposure of 25 listed work tasks, weighted on the basis of their stated centrality to the job: $6.2840 / 19.45 \approx 0.323$ (32.3%)
- Implication: approximately **32%** of current planning-related work tasks can be automated by an LLM according to this analysis

Task No.	Task Description	GPT Exposure Score	Importance (0–100)	Importance (0–1)	Weighted Contribution (Score × Importance)
1	Design, promote, or administer government plans or policies affecting land use, zoning, public utilities, community facilities, housing, or transportation.	0.25	92	0.92	$0.25 \times 0.92 = 0.2300$
2	Advise planning officials on project feasibility, cost-effectiveness, regulatory conformance, or possible alternatives.	0.30	90	0.90	$0.30 \times 0.90 = 0.2700$
3	Create, prepare, or requisition graphic or narrative reports on land use data, including land area maps overlaid with geographic variables, such as population density.	0.55	89	0.89	$0.55 \times 0.89 = 0.4895$

“There are some hard choices involved in producing any plan for the long-term development of the city [...] and it is difficult to see the kind of design and decision-making involved in such planning being replaced by an AI. The sheer range of factors and the uncertainties involved cannot be automated using any available AI technology.”

(Batty, 2018:5)





Thank you.

jonathan.metzger@abe.kth.se